

# San Rio

# DellLago

NAVIA  
Plan 2  
1,635 sq. ft.



elevation 2A



elevation 2B  
(model)



elevation 2C



**McMillin Homes**  
[www.mcmillinhomes.com](http://www.mcmillinhomes.com)

The builder reserves the right to in its sole discretion to make changes or modifications to maps, plans, specifications, materials, textures, features and colors without notice. All maps, plans and illustrations are artist's conception. Square footages are approximate. 2/09



# San Rio

# Del Lago

**Plan 2 • Navia**  
 3-4 bedrooms • 2 bathrooms  
 1,635 square feet • 2-car garage  
 Optional bedroom 4 • Optional back patios

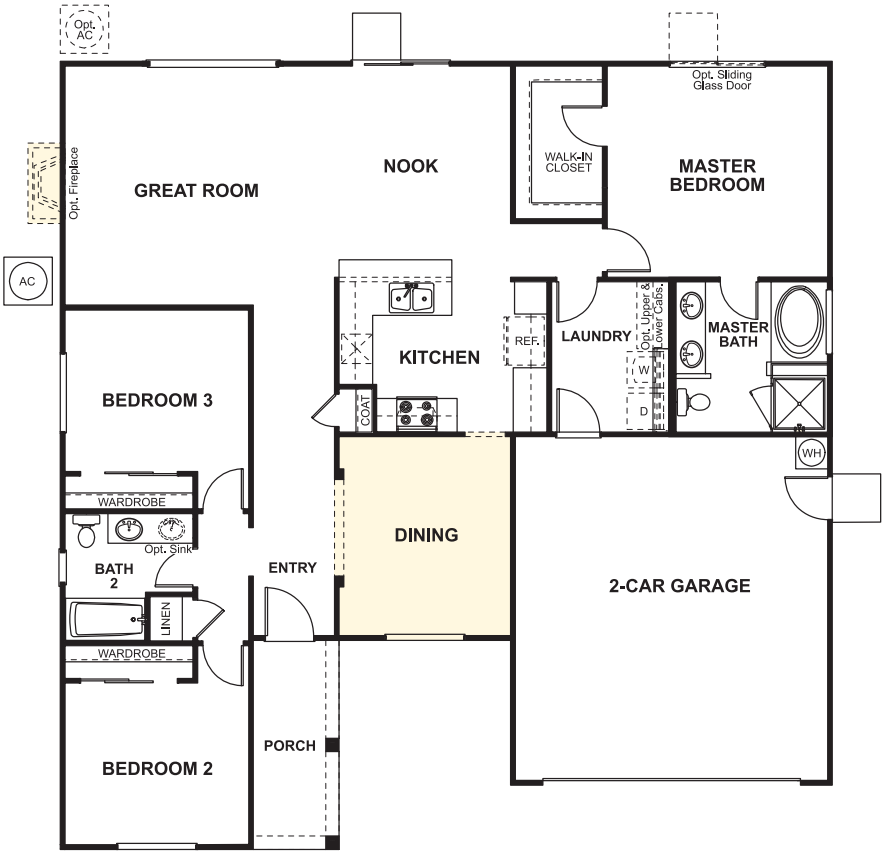


**Optional Patio 3**



**Optional Patio 1**

**Optional Patio 2**



**Optional Bedroom 4 at Dining**